

ALISON WOOD handbags

FALL 2008



F08001 MERCER shopper tote

\$375 Retail

14.5" wide x 10" tall x 5" deep with 9.5" handle drop
black Italian lambskin
leather slits detailed with embroidered stitch
black satin lining
interior two-compartment pocket



F08002 BANK shopper tote

\$300 Retail
\$50 extra for custom

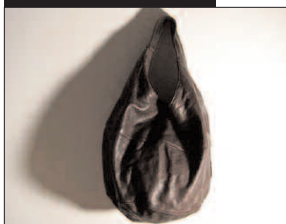
14.5" wide x 10" tall x 5" deep with 9.5" handle drop
black Italian lambskin
black satin lining
interior two-compartment pocket



F08003 PERRY shopper tote

\$300 Retail

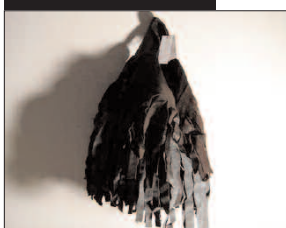
14.5" wide x 10" tall x 5" deep with 9.5" handle drop
ecru leather with black leather handles
black satin lining
interior two-compartment pocket



F08004 CROSBY bucket hobo

\$350 Retail

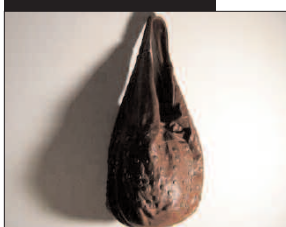
flat dimensions: 21.5" wide x 13" tall with 11" shoulder drop
2.5" width shoulder strap for utmost comfort
chocolate Italian lambskin leather
large interior pocket
magnetic closure



F08005 WOOSTER bucket hobo

\$500 Retail

flat dimensions: 21.5" wide x 13" tall with 11" shoulder drop
2.5" width shoulder strap for utmost comfort
deep chocolate brown Italian lambskin with leather & suede fringe
large interior pocket
magnetic closure



F08006 MULBERRY bucket hobo

\$550 Retail

flat dimensions: 21.5" wide x 13" tall with 11" shoulder drop
2.5" width shoulder strap for utmost comfort
cognac Italian lambskin embellished with distressed vintage brass snaps
large interior pocket
magnetic closure



F08007 BOWERY bucket hobo

\$500 Retail

flat dimensions: 21.5" wide x 13" tall with 11" shoulder drop
2.5" width shoulder strap for utmost comfort
distressed black Italian lambskin with decorative non-working zipper accents
large interior pocket
magnetic closure